

51 Premier Street, Old Trafford, Trafford, M16 9WB

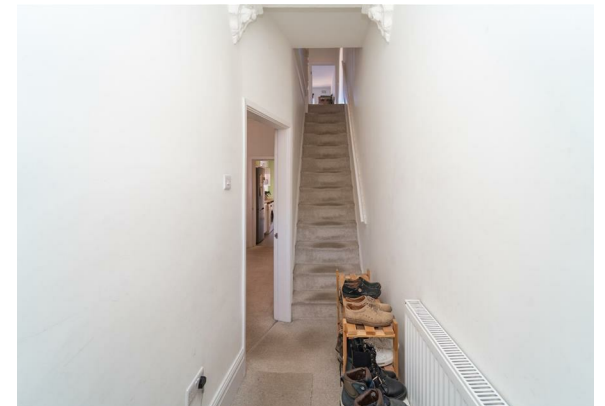


JP&Brimelow
ESTATE AGENTS

Offers In The Region Of £320,000


 3  1  2  C

VIDEO TOUR AVAILABE A well-kept, THREE BEDROOM, period, terrace property here in the heart of Old Trafford. Situated on a highly desirable and sought-after tree-lined residential road off Ayres Road and within easy walking distance of the centre of Old Trafford. Both Hullard and Seymour Park are positioned nearby, as well as the Metrolink Station at Trafford Bar which gives you direct access into the City Centre and Media City, bus routes also give access to Chorlton and Manchester City Centre, and Seymour Park Primary School all being a ten-minute walk away. In brief, the spacious accommodation consists of an entrance hall, a lounge to the front aspect through to a dining room and a fitted kitchen providing access into the rear enclosed courtyard style garden. To the first floor there is a landing leading to two double bedrooms and a further single bedroom, and a three-piece family bathroom. The property benefits from many original period features, is warmed by gas fired central heating, has a rear enclosed courtyard style garden, and an attic providing useful storage space.





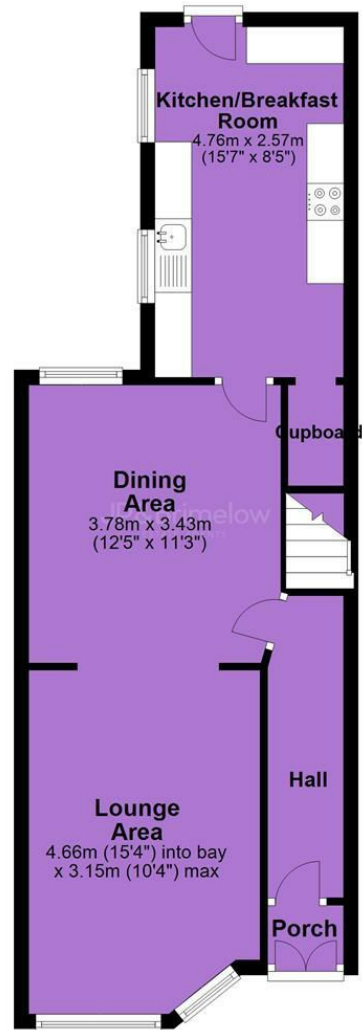
EPC Chart

Energy Efficiency Rating		
	Current	Potential
Very energy efficient - lower running costs		
(92 plus) A		87
(81-91) B		
(69-80) C	71	
(55-68) D		
(39-54) E		
(21-38) F		
(1-20) G		
Not energy efficient - higher running costs		
England & Wales	EU Directive 2002/91/EC 	



Tenure: **Leasehold** Council Tax Band: **A**

Ground Floor



First Floor



JP & Brimelow Estate Agents Ltd
430 Barlow Moor Road, Manchester, M21 8AD
Tel: 0161 8822233
E: sales@jpbrimelow.co.uk www.jpandbrimelow.co.uk



JP & Brimelow
ESTATE AGENTS

NOTICE: JP & Brimelow Estate Agents Ltd for themselves and for the vendors or lessors of this property whose agents they are give notice that:

- (i) the particulars are set out as a general outline only for the guidance of intending purchasers or lessees, and do not constitute, nor constitute part of, an offer or contract;
- (ii) all descriptions, dimensions, references to the condition and necessary permissions for use and occupation, and other details are given in good faith and are believed to be correct but any intending purchasers or tenants should not rely on them as statements or representations of fact but must satisfy themselves by inspection or otherwise as to the correctness of each of them;
- (iii) no person in the employment of JP & Brimelow Estate Agents Ltd has any authority to make or give any representation or warranty whatever in relation to this property.

jpandbrimelowestateagents

@jpandbrimelow